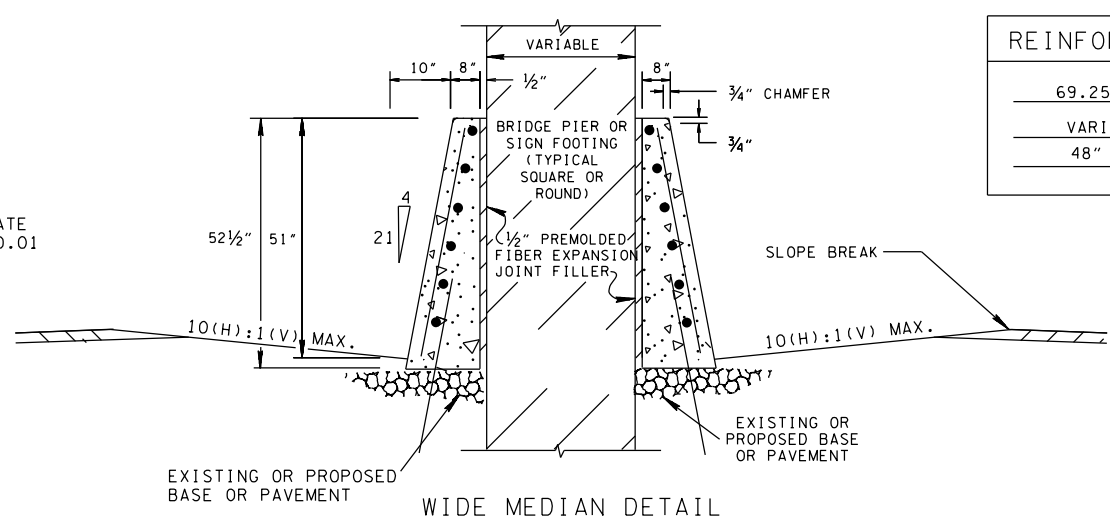
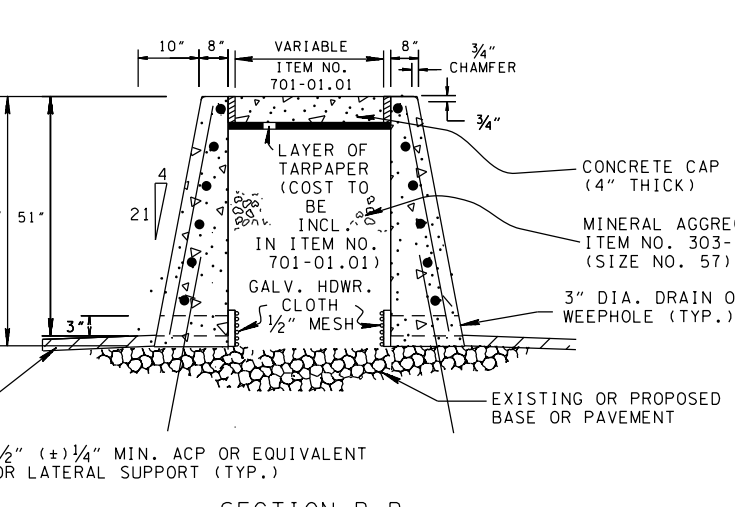
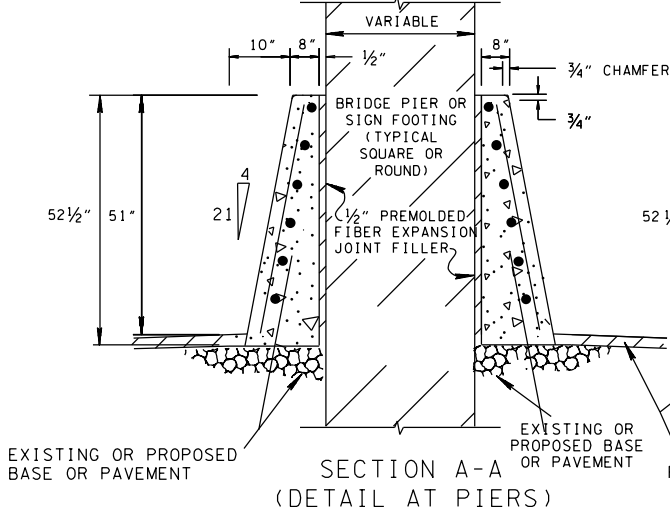
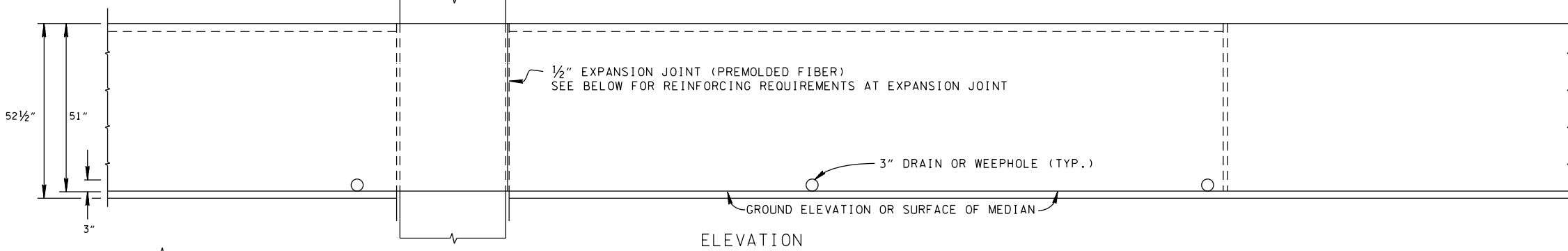


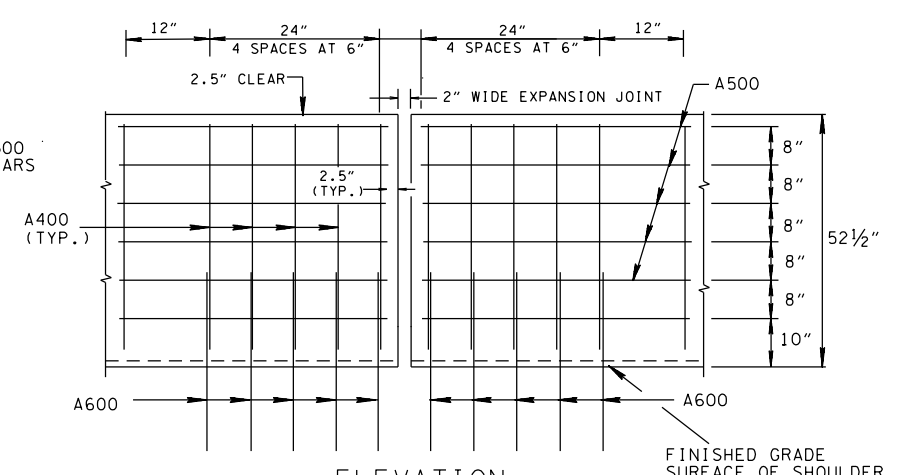
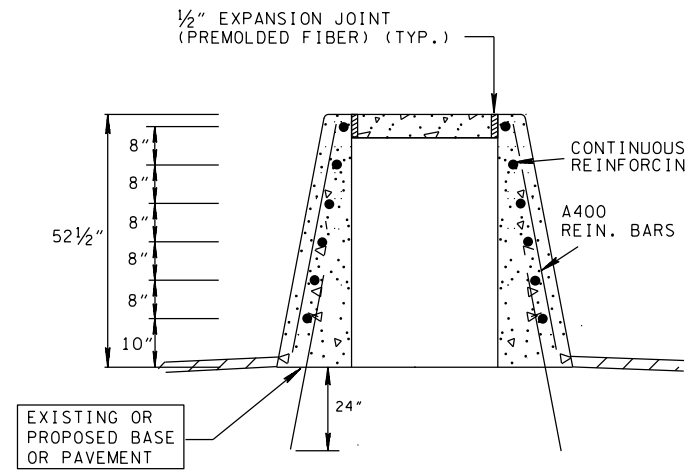
REV. 7-30-10: REVISED REINFORCING STEEL DETAILS AND GENERAL NOTES.

REV. 4-12-16: UPDATE REFERENCES TO STANDARD DRAWINGS, ADDED REINFORCEMENT DETAILS.

SEE S-GRC-3 FOR GUARDRAIL ATTACHMENT OR S-SSMB-3 FOR MEDIAN BARRIER WALL DETAILS OR S-CC-1 AND S-CC-2 FOR CRASH CUSHIONS



| REINFORCING STEEL LEGEND | |
|--------------------------|------|
| 69.25" | A400 |
| VARIABLE | A500 |
| 48" | A600 |



DETAILS OF REINFORCING AT EXPANSION JOINT

GENERAL NOTES

- CONCRETE MEDIAN BARRIER SHALL BE CONSTRUCTED IN ACCORDANCE WITH STANDARD SPECIFICATIONS FOR ROAD AND BRIDGE CONSTRUCTION, SECTION 711 AND/OR CURRENT SPECIAL PROVISIONS.
- SEE STANDARD DRAWING NO. S-SSMB-3 FOR ADDITIONAL DETAILS AND GENERAL NOTES REGARDING CONCRETE AND STEEL SPECIFICATIONS, CONTRACTION AND EXPANSION JOINTS, TEXTURE FINISH, DELINEATORS, AND WEEP HOLES.
- SEE STANDARD DRAWING S-SSMB-2 FOR DETAILS AND REQUIREMENTS FOR MEDIAN BARRIER DELINEATOR. MEDIAN BARRIER DELINEATORS WILL NOT BE REQUIRED IN AREAS WHERE ROADWAY IS LIGHTED.
- ALONG TOP EDGES OF CONCRETE MEDIAN BARRIER THE CONTRACTOR MAY USE 3/4" RADIUS IN LIEU OF 3/4" CHAMFER SHOWN ON THIS DRAWING.
- MAXIMUM SLOPE IN FRONT OF SINGLE SLOPE MEDIAN BARRIER WALL SHALL BE 10(H):1(V).
- PAYMENT WILL BE MADE UNDER ITEM NO. 711-05.77, FLARED SINGLE SLOPE CONCRETE MEDIAN BARRIER WALL PER LINEAR FOOT.

MINOR REVISION -- FHWA APPROVAL NOT REQUIRED.

STATE OF TENNESSEE
DEPARTMENT OF TRANSPORTATION

FLARED
SINGLE SLOPE
CONCRETE MEDIAN
BARRIER WALL
(VERTICAL BACK)

10-15-09 S-SSMB-4